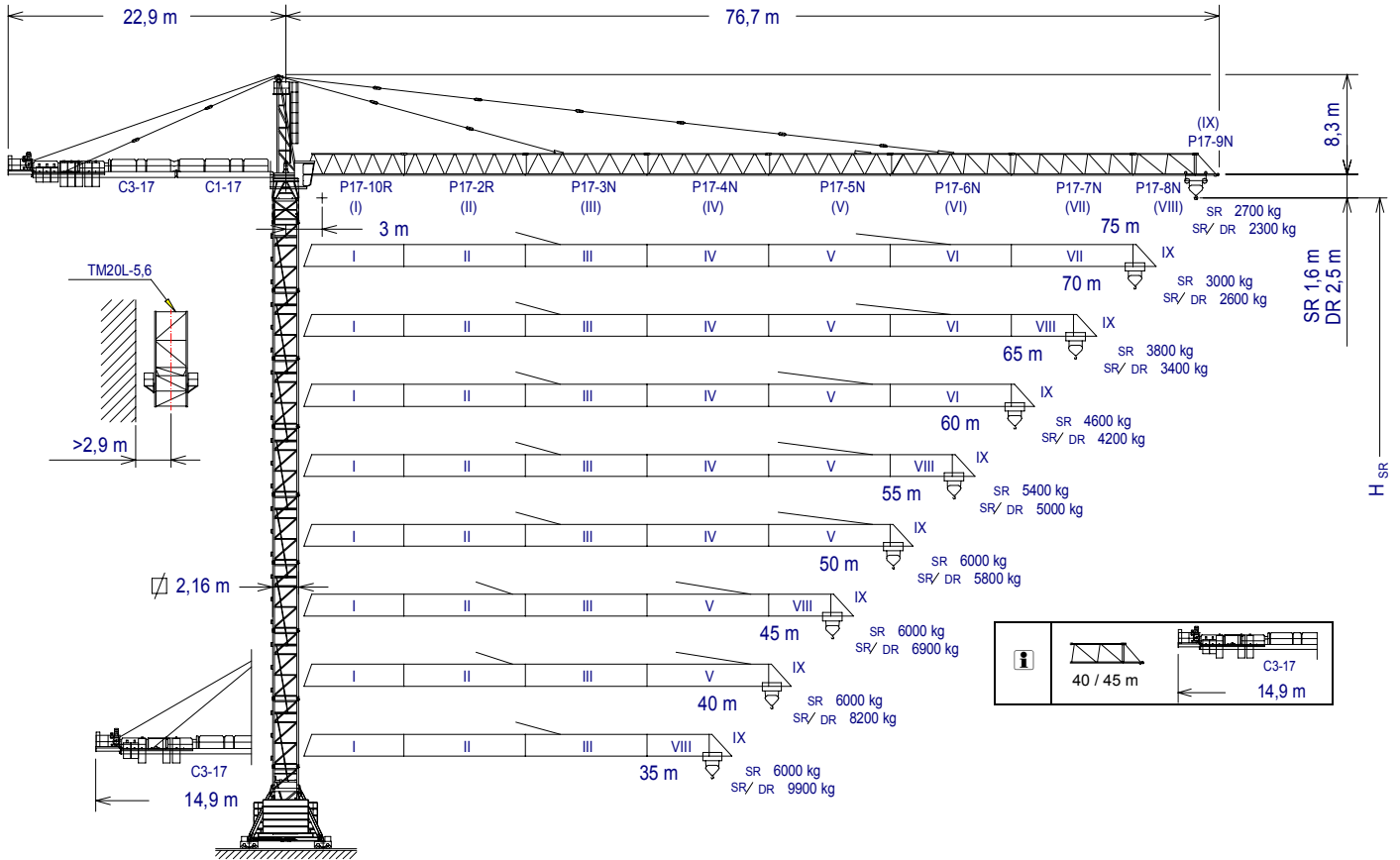


**CE** UNE 58-101  
FEM 1001

UNE-EN-ISO 9001



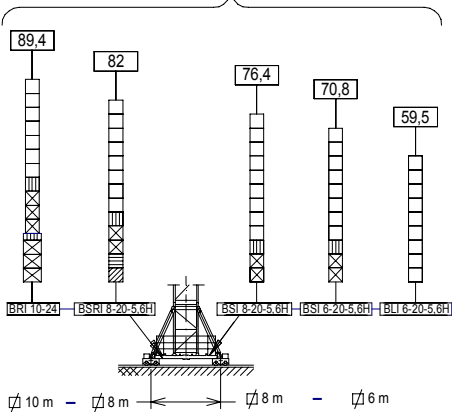
$$H_{DR} = H_{SR} - 0,9$$

Altura máxima bajo gancho sin arriostrar (m).  
 Maximum height under hook without fastening (m).  
 Hauteur maximale sous crochet sans ancrage (m).  
 Максимальная высота под крюком без крепления (m).  
 Bağlantısız maksimum kanca altı yüksekliği (m).  
 أقصى ارتفاع تحت الخطاف بدون ربط (m)

|               |            |                |            |
|---------------|------------|----------------|------------|
| C3-17         | 153.50.500 | BSR1 8-20-5,6H | 166.20.500 |
| C1-17         | 142.50.900 | BRI 10-24      | 156.20.500 |
| P17-10R       | 153.40.500 | TM20L-5,6      | 166.35.000 |
| P17-2R        | 153.41.600 | TL20           | 153.31.000 |
| P17-3N        | 142.42.500 | TL20-5,6       | 204.31.400 |
| P17-4N        | 142.43.500 | TS20-5,6A      | 204.31.500 |
| P17-5N        | 142.44.500 | TS20-5,6       | 204.31.200 |
| P17-6N        | 153.45.000 | TSR20-5,6A     | 204.31.300 |
| P17-7N        | 153.46.000 | TSR20-5,6      | 204.31.000 |
| P17-8N        | 142.46.500 | TR24/TS20      | 156.36.800 |
| P17-9N        | 142.48.500 | TR24-5,6       | 156.30.700 |
| BLI 6-20-5,6H | 166.20.000 | TRD24-5,6      | 156.30.300 |
| BSI 6-20-5,6H | 166.20.700 | ABH 100        | 201.23.000 |
| BSI 8-20-5,6H | 166.20.200 | ABH 100B       | 204.23.000 |

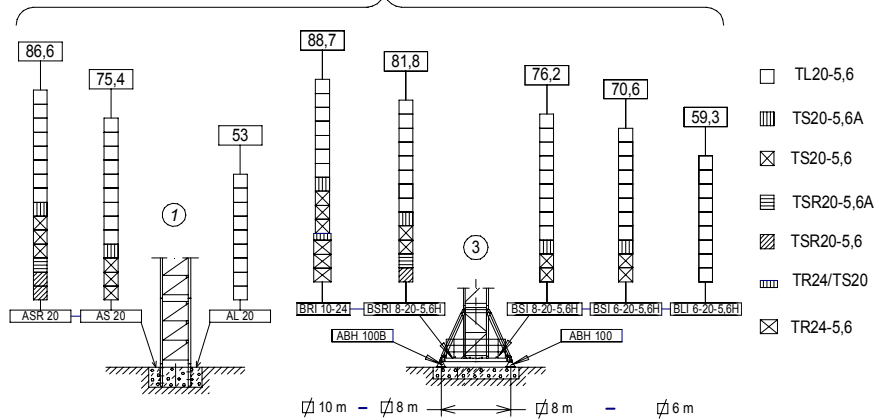
(H) TRASLACIÓN / TRAVELLING /

TRASLATION / ПЕРЕМЕЩЕНИЕ / RAY YÜRÜYÜŞLÜ / متحركة


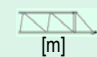




(H) ESTACIONARIA / STATIONARY /

STATIONAIRE / СТАЦИОНАРНОЕ СОСТОЯНИЕ / САБИТ / ثابتة





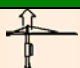



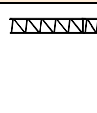
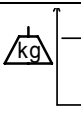
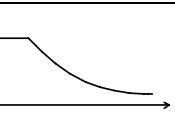


**CARGAS / LOADS / CHARGES / НАГРУЗКИ / YÜKLER / الأحمال** **J300N.A**

|  |         |  |      |      |      |      |      |      |      |                      |       |
|--|---------|--|------|------|------|------|------|------|------|----------------------|-------|
|  | SR (kg) | Cargas máximas / Maximum loads / Charges maximales / Максимальные нагрузки / Maksimum yük / أقصى حمولة<br>SR-6.000 kg              |      |      |      |      |      |      |      | 6000 kg<br>@ ... (m) |       |
|  | [m]     | Alcance del gancho [m] / Hook reach [m] / Portée du crochet (m) / Радиус действия крюка (m) / Kancanın yüksekliği (m) / مدى الخطاف |      |      |      |      |      |      |      |                      |       |
|  |         | 75   | 70   | 65   | 60   | 55   | 50   | 45   | 40   | 35                   |       |
| 75 m   | 2700    | 2945   | 3225 | 3550 | 3935 | 4400 | 4965 | 5675 | 6000 | 6000                 | 38,06 |
| 70 m   | —       | 3000   | 3285 | 3615 | 4010 | 4480 | 5055 | 5775 | 6000 | 6000                 | 38,66 |
| 65 m   | —       | —  | 3800 | 4175 | 4620 | 5150 | 5800 | 6000 | 6000 | 6000                 | 43,66 |
| 60 m   | —       | —  | —    | 4600 | 5080 | 5660 | 6000 | 6000 | 6000 | 6000                 | 47,46 |
| 55 m   | —       | —  | —    | —    | 5400 | 6000 | 6000 | 6000 | 6000 | 6000                 | 50,07 |
| 50 m   | —       | —  | —    | —    | —    | 6000 | 6000 | 6000 | 6000 | 6000                 | 50    |
| 45 m   | —       | —  | —    | —    | —    | —    | 6000 | 6000 | 6000 | 6000                 | 45    |
| 40 m   | —       | —  | —    | —    | —    | —    | —    | 6000 | 6000 | 6000                 | 40    |
| 35 m   | —       | —  | —    | —    | —    | —    | —    | —    | 6000 | 6000                 | 35    |

|  |              |  |      |      |      |      |      |      |      |       |       |       |                             |       |
|--|--------------|--|------|------|------|------|------|------|------|-------|-------|-------|-----------------------------|-------|
|  | SR / DR (kg) | Cargas máximas / Maximum loads / Charges maximales / Максимальные нагрузки / Maksimum yük / أقصى حمولة<br>SR/DR - 6000/12000 kg    |      |      |      |      |      |      |      |       |       |       | 6000 /12000 kg<br>@ ... (m) |       |
|  | [m]          | Alcance del gancho [m] / Hook reach [m] / Portée du crochet (m) / Радиус действия крюка (m) / Kancanın yüksekliği (m) / مدى الخطاف |      |      |      |      |      |      |      |       |       |       |                             |       |
|  |              | 75   | 70   | 65   | 60   | 55   | 50   | 45   | 40   | 35    | 30    | 25    | 20                          |       |
| 75 m   | 2300         | 2550   | 2840 | 3175 | 3575 | 4050 | 4635 | 5365 | 6000 | 6000  | 6000  | 6000  | 6000                        | 36,46 |
|  |              |  |      |      |      |      |      |      | 6300 | 7550  | 9300  | 11925 | 19,89                       |       |
| 70 m   | —            | 2600   | 2890 | 3235 | 3635 | 4120 | 4710 | 5450 | 6000 | 6000  | 6000  | 6000  | 36,94                       |       |
|  |              |  |      |      |      |      |      |      | 6400 | 7665  | 9440  | 12000 | 20,15                       |       |
| 65 m   | —            | —  | 3400 | 3785 | 4235 | 4780 | 5445 | 6000 | 6000 | 6000  | 6000  | 6000  | 41,53                       |       |
|  |              |  |      |      |      |      |      |      | 6275 | 7345  | 8765  | 10760 | 22,65                       |       |
| 60 m   | —            | —  | —    | 4200 | 4690 | 5280 | 6000 | 6000 | 6000 | 6000  | 6000  | 6000  | 45                          |       |
|  |              |  |      |      |      |      |      |      | 6900 | 8055  | 9600  | 11760 | 24,55                       |       |
| 55 m   | —            | —  | —    | —    | 5000 | 5620 | 6000 | 6000 | 6000 | 6000  | 6000  | 6000  | 47,36                       |       |
|  |              |  |      |      |      |      | 6380 | 7325 | 8545 | 10165 | 12000 | 12000 | 25,83                       |       |
| 50 m   | —            | —  | —    | —    | —    | 5800 | 6000 | 6000 | 6000 | 6000  | 6000  | 6000  | 48,61                       |       |
|  |              |  |      |      |      |      | 6580 | 7550 | 8800 | 10465 | 12000 | 12000 | 26,52                       |       |
| 45 m   | —            | —  | —    | —    | —    | —    | 6000 | 6000 | 6000 | 6000  | 6000  | 6000  | 45                          |       |
|  |              |  |      |      |      |      | 6900 | 7915 | 9215 | 10950 | 12000 | 12000 | 27,61                       |       |
| 40 m   | —            | —  | —    | —    | —    | —    | —    | 6000 | 6000 | 6000  | 6000  | 6000  | 40                          |       |
|  |              |  |      |      |      |      |      | 8200 | 9545 | 11335 | 12000 | 12000 | 28,48                       |       |
| 35 m   | —            | —  | —    | —    | —    | —    | —    | —    | 6000 | 6000  | 6000  | 6000  | 35                          |       |
|  |              |  |      |      |      |      |      |      | 9900 | 11750 | 12000 | 12000 | 29,43                       |       |

**CARACTERISTICAS DE MECANISMOS / MECHANISMS FEATURES / CARACTÉRISTIQUES DES MÉCANISMES / ХАРАКТЕРИСТИКИ МЕХАНИЗМОВ / MEKANİZMALARIN ÖZELLİKLERİ / الخصائص الآلية** **J300N.A**

|  |   |   |   |   |   |                 |
|--|---|---|---|---|---|-----------------|
| *opcional<br>*optional<br>*en option<br>*опция<br>*opsiyonel<br>*اختياري           |  |  |  |    |  |                 |
|  | EC100120VF<br>73,5 kW   | * EC150165VF<br>110 kW  | TG2020VF<br>2x7,3 kW  | OG2207VF<br>3x5,5 kW  | TC7105VF<br>5,5 kW  | TH2006<br>15 kW |
|  | 3   6<br>0..120   0..60   | 3   6<br>0..165   0..82   | 0...20<br>m/min   | 0...0,2<br>0,2...0,35<br>0,35...0,7<br>r/min<br>sl/min  | 6 t<br>0...105<br>m/min   | 0,6<br>m/min    |
|  | 6   12<br>0..60   0..30   | 6   12<br>0..82   0..41   |  | P <sub>TOTAL</sub> ( EC100120VF+ OG2207VF + TC7105VF) = 95,4 kW<br>P <sub>TOTAL</sub> ( EC150165VF+ OG2207VF + TC7105VF) = 132 kW |   |                 |
|  | H ≤   | SR 364 m<br>DR 182 m  | 400V<br>50Hz  |    |  |                 |



| LISTA DE EMBARQUE / PACKING LIST / LISTE DE COLISAGE / СПИСОК ПОСТАВКИ / ÇEKİ LİSTESİ / قائمة التحميل   |            |       |               | J300N.A      |             |            |       |       |
|---|------------|-------|---------------|--------------|-------------|------------|-------|-------|
| DENOMINACIÓN / DENOMINATION / DÉSIGNATION / НАЗВАНИЕ / AÇIKLAMA / اسم   |            |       | L [m]         | A [m]        | H [m]       | P / W [kg] |       |       |
| Torre inferior / Lower tower /<br>Tour inférieure / Нижняя башня<br>Alt kule / البرج السفلي   | TLI20-5,6  |       | 5,886         | 2,306        | 2,357       | 4235       |       |       |
|   | TSI20-5,6  |       | 5,966         | 2,328        | 2,390       | 5390       |       |       |
|   | TSRI20-5,6 |       | 5,990         | 2,257        | 2,257       | 6562       |       |       |
|   | TRID24-5,6 |       | 5,990         | 3,202        | 3,202       | 8400       |       |       |
| Torre / Tower / Tour<br>Башня / Kule / برج  | TL20       |       | 4,175         | 2,201        | 2,281       | 2095       |       |       |
|   | TL20-5,6   |       | 5,886         | 2,306        | 2,357       | 2938       |       |       |
|   | TS20-5,6   |       | 5,966         | 2,328        | 2,390       | 3604       |       |       |
|   | TSR20-5,6  |       | 5,990         | 2,257        | 2,257       | 4262       |       |       |
|   | TSR20-5,6A |       | 5,926         | 2,388        | 2,325       | 3637       |       |       |
|   | TS20-5,6A  |       | 5,978         | 2,381        | 2,331       | 4221       |       |       |
|   | TR24-5,6   |       | 5,990         | 2,760        | 2,835       | 4625       |       |       |
| TRD24-5,6   | 5,977      | 2,740 | 2,285         | 5130         |             |            |       |       |
| Torre asiento pista + base punta de torre + orientación<br>Slewing table + tower head base + slewing mechanism<br>Tour pivot + base du porte-flèche + mécanisme d'orientation<br>Сиденье площадки + основание верхней секции башни + поворотный механизм<br>Göbek +kule kafa bölümü tabanı+mekanizma<br>برج وحدة الدوارن + قاعدة رأس البرج + آلية الدوران |            |       |               | 5,08         | 2,53        | 2,27       | 7390  |       |
| Punta de torre / Tower head / Porte-flèche / верхняя секция башни / kulenin kafa bölümü / رأس البرج   |            |       |               | 8,19         | 1,41        | 1,82       | 2820  |       |
| Conjunto asiento pista, punta de torre, orientación<br>Slewing table assembl +, tower head + slewing<br>Groupe pivot + porte-flèche + mécanisme d'orientation<br>Сиденье площадки + верхняя секция башни + поворотный механизм<br>Göbek +kulenin kafa bölümü+mekanizma<br>مجموعة وحدة الدوارن + رأس البرج + آلية الدوران                                  |            |       |               | 12,15        | 3,05        | 2,48       | 10750 |       |
| Tramo de pluma<br>Jib section<br>Tronçon de flèche<br>Секция стрелы<br>Vom bölümü<br>أجزاء الذراع   |            |       |               |              | P17-10R (I) | 8,81       | 1,68  | 1,99  |
|   |            |       | P17-2R (II)   |              | 10,19       | 1,60       | 2,03  | 2050  |
|   |            |       | P17-3N (III)  |              | 10,19       | 1,60       | 2,04  | 1970  |
|   |            |       | P17-4N (IV)   |              | 10,19       | 1,60       | 1,89  | 1680  |
|   |            |       | P17-5N (V)    |              | 10,19       | 1,60       | 1,99  | 1530  |
|   |            |       | P17-6N (VI)   |              | 10,19       | 1,60       | 1,99  | 1450  |
|   |            |       | P17-7N (VII)  |              | 10,19       | 1,60       | 1,89  | 1165  |
|   |            |       | P17-8N (VIII) |              | 5,30        | 1,60       | 1,89  | 745   |
|   |            |       | P17-9N (IX)   |              | 2,16        | 1,60       | 2,20  | 420   |
| Polipasto / Hook assembly / Palan / Полуснаст / Kanca takımı / بكرة   |            |       | SR            |              | 1,08        | 0,32       | 0,93  | 295   |
|   |            |       | DR            |              | 1,20        | 0,38       | 1,99  | 580   |
| Tirante sostén pluma / Jib support tie / Tirant de fleche / Растяжка поддержки стрелы / Kol destek bağları / مشد دعامة الذراع   |            |       | Long          |              | 4,97        | 0,40       | 0,74  | 1605  |
|   |            |       | Short         |              | 6,02        | 0,22       | 0,71  | 870   |
| Carro / Trolley / Chariot / Грузовая тележка / Şaryo / عربة   |            |       | SR            |              | 1,78        | 2,33       | 3,02  | 400   |
|   |            |       | DR            |              | 1,92        | 2,34       | 3,02  | 580   |
| Contrapluma con plataformas / Counterjib with platforms<br>Contre-flèche avec plateformes / Противовесная консоль с платформами / Platformlu kuuyruk / الذراع المقابل مع المنصة   |            |       |               | 12,10        | 2,76        | 0,62       | 3085  |       |
| Prolongación contrapluma con plataforma / Counterjib extension with platform<br>Prolongement contre-flèche avec plateforme / Удлинение противовесной консоли с платформой / Kuuyruk platformla uzatılması / امتداد الذراع المعاكس مع الممرات  |            |       |               | 8,30         | 1,91        | 0,58       | 1925  |       |
| Plataforma y cabina / Platform and cabin / Plateforme et cabine<br>Платформа и кабина / Platform ve kabin / منصة وكابينة  |            |       |               | 3,759        | 1,65        | 2,338      | 850   |       |
| Soporte y elevación (sin cable) / Support and hoisting (without rope) / Support et levage (sans câble) / Опора и подъем (без троса) / Destek ve vinç kulesi (kabloşuz) / دعم ورفع (بدون كابل)   |            |       |               | EC 100120 VF | 3,2         | 2,3        | 2,2   | 3900  |
|   |            |       | EC 150165 VF  | 3,2          | 2,3         | 2,2        | 3900  |       |
| Transporte torre de montaje/ Jacking cage transport /<br>Transport de tour de montage / Транспортировка монтажной башни / Kaldırma kafesinin taşınması / نقل برج التركيب  |            |       | TM20L-5,6     |              | 9,550       | 2,070      | 2,520 | 5,690 |

| LASTRES INFERIORES / LOWER BALLASTS / LESTS INFÉRIEURS / НИЖНИЙ БАЛЛАСТ / ALT AĞIRLIK TAŞLARI / نقل |              |         |         | J300N.A  |          |
|---|--------------|---------|---------|----------|----------|
| BRI 10-24   | H (m)        | 66,3    | 77,5    | 88,7     |          |
|   | P (t)        | 60      | 72      | 96       |          |
| BSRI 8-20-5,6H  | H (m)        | 53,8    | 65      | 81,8     |          |
|   | LI=12t P (t) | LI + 48 | LI + 60 | LI + 108 |          |
| BSI 8-20-5,6H   | H (m)        | 53,8    | 65      | 76,2     |          |
|   | LI=12t P (t) | LI + 48 | LI + 60 | LI + 84  |          |
| BSI 6-20-5,6H   | H (m)        | 31,4    | 42,6    | 59,4     | 70,6     |
|   | LI=12t P (t) | LI + 48 | LI + 60 | LI + 84  | LI + 108 |
| BLI 6-20-5,6H   | H (m)        | 31,3    | 42,5    | 59,3     |          |
|   | LI=12t P (t) | LI + 48 | LI + 60 | LI + 84  |          |

H: Altura bajo gancho / Height under hook / Hauteur maximale sous crochet Высота под крюком / Kanca altı yüksekliği / الارتفاع أسفل الخطاف

P: Peso / Weight / Poids / Вес / Ağırlık / وزن

Para alturas intermedias tomar el lastre correspondiente a la altura superior / For intermediate heights take the ballast corresponding to the higher height / Pour les hauteurs intermédiaires, opter pour le lest correspondant à la hauteur immédiatement supérieure / Для промежуточных высот возьмите балласт, соответствующий большей высоте / Orta yükseklikler için daha üst bir yüksekliğe karşılık



| T  | H    |          |           |            |            | H   | T       |
|----|------|----------|-----------|------------|------------|-----|---------|
| 1  | 8,2  | TL20-5,6 | TL20-5,6  | TL20-5,6   | TL20-5,6   | 5,6 | 8,2 1   |
| 2  | 13,8 |          |           |            |            |     | 13,8 2  |
| 3  | 19,4 |          |           |            |            |     | 19,4 3  |
| 4  | 25   |          |           |            |            |     | 25 4    |
| 5  | 30,6 |          |           |            |            |     | 30,6 5  |
| 6  | 36,2 |          |           |            |            |     | 36,2 6  |
| 7  | 41,8 |          |           |            |            |     | 41,8 7  |
| 8  | 47,4 |          |           |            |            |     | 47,4 8  |
| 9  | 53   |          |           | TS20-5,6A  | TS20-5,6A  | 5,6 | 53 9    |
| 10 | 58,6 | AL20     | TS20-5,6A | TS20-5,6   | TS20-5,6   | 5,6 | 58,6 10 |
| 11 | 64,2 |          | TS20-5,6  |            |            |     | 64,2 11 |
| 12 | 69,8 |          |           | TSR20-5,6A | TSR20-5,6A | 5,6 | 69,8 12 |
|    |      |          |           | TSR20-5,6  | TSR20-5,6  | 5,6 | 75,4 13 |
|    |      |          |           |            |            |     | 81 14   |
|    |      |          |           |            |            |     | 86,6 15 |
|    |      |          |           |            |            |     | 69,8 12 |
|    |      |          |           |            |            |     | 71 12   |
|    |      |          |           |            |            |     | 76,6 13 |
|    |      |          |           |            |            |     | 82,2 14 |
|    |      |          |           |            |            |     | 87,8 15 |
|    |      |          |           |            |            |     | 93,4 16 |

AL20 153.21.800  
 ALD20 160.21.250  
 AS20 160.21.010  
 ASD20/24 160.21.080  
 ASR20 160.21.200  
 ASRD20/24 156.21.000  
 AR 24 156.21.200  
 TL20 153.31.000  
 TL20-5,6 204.31.400  
 TS20-5,6 204.31.200  
 TS20-5,6A 204.31.500  
 TSR20-5,6 204.31.300  
 TR24/TS20 156.36.800  
 TR24-5,6 156.30.700  
 TRD24-5,6 156.30.300

T: Torre / Tower / Tour / Башни / Kuleler / أبراج  
 H: Altura / Height / Hauteur / Высота / Yükseklik / ارتفاع

Otras configuraciones de torre / Other tower configuration / Autres configurations / Прочие конфигурации / Diğer konfigürasyonlar / مكونات أخرى

Transporte / Transport / Transport / Транспортировка / Taşıma / نقل

H=59,3 m + BLI 6-20-5,6H

11x

11x HIGH CUBE 40'

**TREPADO / CLIMBING / TÉLESCOPAGE / ЛЕСТНИЦА / TIRMANMA / التسلق** **J300N.A**

$h_{max} = TL20-5,6T + 6 \times TL20-5,6 + 2 \times TL20$

|           | ▶       | ■    |
|-----------|---------|------|
| h (m)     | 49,6    |      |
| D (m)     | 10 – 20 |      |
| P (KN)    | 1132    | 1012 |
| Rmax (KN) | 288     | 443  |

TL20-5,6T = 136.32.700

Trepado interno / Internal climbing. / Télescopage intérieur / Внутренняя лестница / Bina içi tirmanma / التسلق الداخلي

